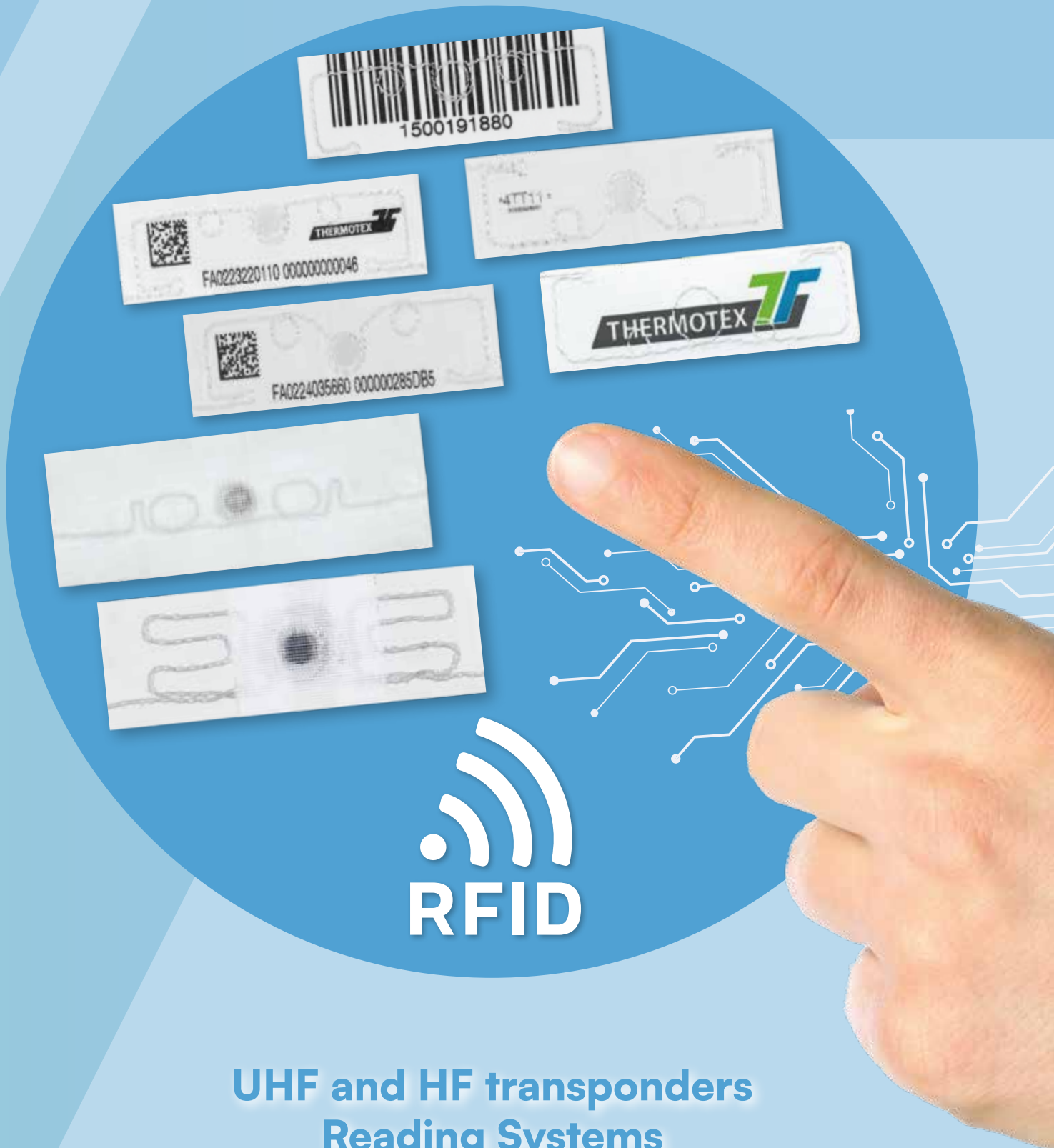
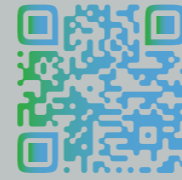


# RFID TECHNOLOGY



  
**RFID**

**UHF and HF transponders  
Reading Systems**



# UHF FOR BIG VOLUMES

RFID technology (Radio-Frequency Identification) enables contactless identification of objects via radio waves. A distinction is made between HF technology (High Frequency) for shorter distances and precise applications, and UHF technology (Ultra High Frequency), which is used for longer ranges and higher data volumes.

Compatible reader systems communicate with these transponders and open up a wide range of application possibilities.

With our THERMOTEX products, we are ready for the future.

## Your benefits:

- ▶ Fully automated textile identification
- ▶ Unique identification number
- ▶ Contactless reading
- ▶ Single, stacked, and bulk reading
- ▶ Suitable for heat-sealing or sewing in
- ▶ Suitable for industrial ironing
- ▶ Industrial-wash resistant



## A small shirt on a big journey

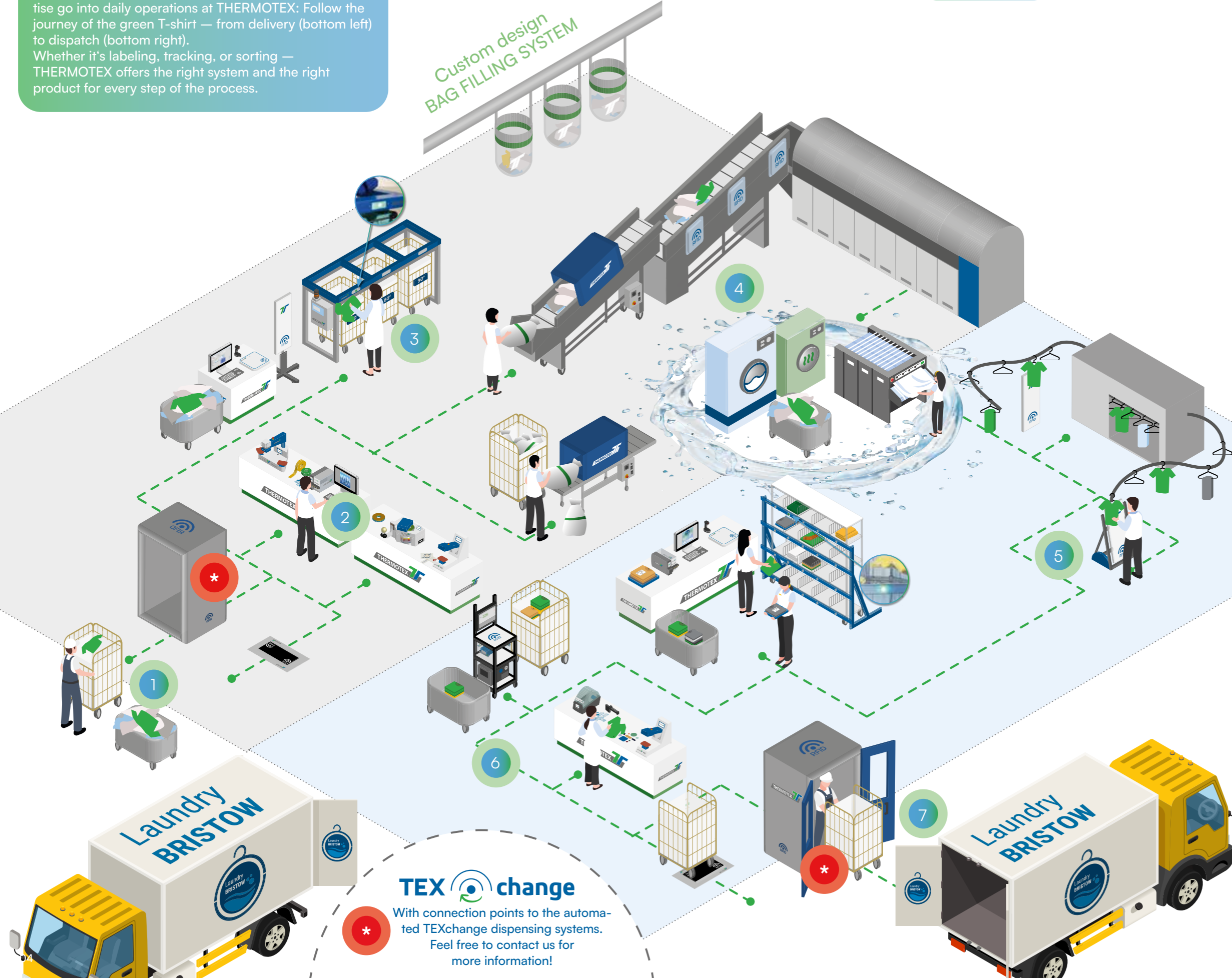


See for yourself how much care, technology, and expertise go into daily operations at THERMOTEX: Follow the journey of the green T-shirt — from delivery (bottom left) to dispatch (bottom right). Whether it's labeling, tracking, or sorting — THERMOTEX offers the right system and the right product for every step of the process.

Data capture via barcode or RFID throughout the entire washing process



Custom design  
BAG FILLING SYSTEM



### 1 LAUNDRY INTAKE

- ▶ Mesh containers, laundry transport trolleys
- ▶ Resident laundry bags, container covers (inner & outer), laundry bags and nets
- ▶ UHF gate, TEXchange connection point, floor antenna

### 2 LABELING

- ▶ Heat-sealing machines
- ▶ Thermal transfer printing systems
- ▶ Labels and emblems
- ▶ RFID technology: transponders, reader systems
- ▶ Software: WinTex 5, Saturn 3

### 3 SORTING — INTAKE

- ▶ RFID technology: HF / UHF transponders
- ▶ Reader systems:
  - HF tunnel antenna
  - Table reader system
  - Panel antenna (ceiling-mounted or freestanding)
  - Picking trolley (HF or UHF)
  - Scanner
  - Incline conveyor (HF or UHF)
- ▶ IN-SorTex sorting system (with LED display)
- ▶ Software: Saturn 3

### 4 WASHING PROCESS

- ▶ Laundry transport trolleys
- ▶ Washing, drying, industrial ironing

### 5 SORTING — OUTGOING

- ▶ RFID technology: HF / UHF transponders
- ▶ Reader systems:
  - Table reader system
  - Panel antenna (ceiling-mounted or freestanding)
  - Picking trolley (HF or UHF)
  - Scanner
- ▶ OUT-SorTex sorting aid (with LED display, optional confirmation function)
- ▶ Software: Saturn 3

### 6 FOLDING AND REPAIRING

- ▶ RFID technology: HF / UHF transponders, Table antennas, handheld scanners
- ▶ Thermal transfer printing systems and supplies
- ▶ Heat-sealing machines and repair emblems

### 7 LAUNDRY DISPATCH

- ▶ Mesh containers, laundry transport trolleys
- ▶ Resident laundry bags, container covers (inner & outer), laundry bags and nets
- ▶ UHF box, TEXchange connection point, floor antenna

**TEXchange**

With connection points to the automated TEXchange dispensing systems. Feel free to contact us for more information!

### For Heat-sealing

Our transponders for heat-sealing offer a robust solution for the simple and fast identification of textile products. They are characterized by their high durability.



### F10 58 x 18.5 mm • Thickness: 0.5 mm < 2.5 mm in chip area



Article	Blank Item no. 67631	With EPC number Item no. 67582	With logo and EPC number Item no. 67966	With Barcode Item no. 67967	With logo Item no. 67632
---------	-------------------------	-----------------------------------	--------------------------------------------	--------------------------------	-----------------------------

- ▶ **Application areas:** Tracking of workwear, flat linen, and institutional laundry, e.g., in laundry intake/dispatch or cabinet and room inventory
- ▶ **Reading method:** Bulk reading, e.g., in mesh trolleys
- ▶ **Reading range:** Up to 6 meters
- ▶ **Compatibility:** All common UHF reading systems such as Box, Gate, Shelf, Fix Shelf, Universal, Compact, TSL
- ▶ **Application method:** Sewing in / heat-sealing

### F20 70 x 15 mm • Thickness: 1.7



Article	Blank Item no. 69349
---------	-------------------------

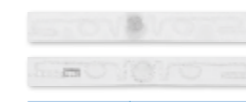
- ▶ **Application areas:** Tracking of workwear, flat linen, and institutional laundry, e.g., in laundry intake/dispatch or cabinet and room inventory
- ▶ **Reading method:** Bulk reading, e.g., in mesh trolleys
- ▶ **Reading range:** Up to 6 meters
- ▶ **Compatibility:** All common UHF reading systems such as Box, Gate, Shelf, Fix Shelf, Universal, Compact, TSL
- ▶ **Application method:** Sewing in / heat-sealing

### F11 70 x 11 mm • Thickness: 0.5 mm < 2.4 mm in chip area



Article	Item no. 68108
---------	----------------

### F19 70 x 9 mm • Thickness: 2.5 mm



Article	Item no. 70007
---------	----------------

### F21 75 x 12 mm • Thickness: 1.9 mm



Article	Item no. 69606
---------	----------------

### F31 74 x 10 mm • Thickness: 1.6 mm



Article	Item no. 70014
---------	----------------

### F13 70 x 25 mm • Thickness: 2.4 mm



Article	Blank Item no. 70370	With EPC number Item no. 70371	With logo und EPC number Item no. 70373	With Barcode Item no. 70375
---------	-------------------------	-----------------------------------	--------------------------------------------	--------------------------------

- ▶ **Application areas:** Tracking of institutional laundry, workwear, and flat linen — e.g., in cleanroom environments, laundry intake/dispatch, or inventory of cabinets and rooms
- ▶ **Reading method:** Bulk reading, e.g., in mesh trolleys
- ▶ **Reading range:** Up to 6 meters
- ▶ **Compatible with:** All common UHF reading systems such as Box, Gate, Shelf, Fix Shelf, Universal, Compact, TSL
- ▶ **Application method:** Sewing on (as a flag or all-around) and sewing in



### For Sewing in

Our transponders for sewing in are the ideal choice for seamless integration into textile products. They provide a solution for product authentication without compromising comfort or aesthetics.



### For Overpatching

Our transponders for overpatching ensure reliable and long-lasting identification. The transponders, which are attached using a patch, gain an additional protective layer through overpatching.



### F12 36 x 11 mm • Thickness: 0.5 mm • 2.4 mm in chip area

Article	Application area	Reading method	Reading range	Compatible with	Application method
Blank Item no. 68163	Identification of resident laundry	Single or stacked reading	Up to 1 meter	Shelf, Fix Shelf, handheld reader, Compact	Overpatching with a labeling tag — we recommend FixTexx in sizes 53 x 19 mm or 53 x 32 mm
Blank Item no. 70268					

- UHF transponder for mounting
- ▶ Robust and durable transponder
- ▶ Waterproof

## UHF TRANSPONDER FOR LABELING TRANSPORT SYSTEMS

### UHF container transponder C2

- ▶ Dimensions (L x W x H): 52 x 16 x 8.5 mm
- ▶ Max. read/write distance: 2 m
- ▶ For screwing onto containers

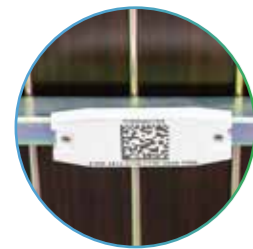
C2	Blank	Item no. 65690
C2	With laser marking	Item no. 67783
C2	With laser marking and mounting bracket for cable tie attachment	Item no. 25053



C2 blank



C2 with laser engraving and mounting bracket



C3 mounted on the underside of the mesh container

C3 with laser engraving



### UHF container transponder C3

- ▶ Dimensions (L x W x H): 95 x 35 x 8 ± 0.4 mm
- ▶ Max. read/write distance: 5 m
- ▶ Mounting on metal using rivets, screws, or industrial adhesive

C3	With laser engraving	Item no. 68872
C3	With laser marking and mounting bracket for cable tie attachment	Item no. 24935

## UHF SELF-ADHESIVE LABELS

- ▶ Thermal transfer printable
- ▶ Adhesive: permanent
- ▶ Material: white PET, blank
- ▶ Format: on roll

Formats and versions available on request



## ACCESSORY: WOVEN TRANSPONDER POUCH

- ▶ Available in various pouch sizes
- ▶ Quality: taffeta
- ▶ Tubular weave
- ▶ Heat-cut edges
- ▶ For sewing in



For F10 transponders  
Item no. 67992



For UHF sew-in transponders  
Item no. 70116

Custom weaving available

## UHF-BOX

The UHF box version with self-opening and self-closing doors is the perfect solution for an optimized workflow. Your chipped textiles are captured efficiently and read without error. During the reading process, the doors automatically lock and reopen only once all textiles have been successfully recorded.

### General data

- ▶ **Application area:** Identification of laundry items in mesh containers at laundry intake/dispatch
- ▶ **Transponder types:** F10, F11, F20 F21, F19, F31, F13
- ▶ **Reading method:** Bulk reading
- ▶ **Fast reader control technology with intelligent antenna illumination ensures time-optimized data capture**
- ▶ **Interfaces:** Ethernet, USB, RS 232
- ▶ **Optional:** With automatic door drive



UHF-Box suitable for mesh containers

- ▶ **External dimensions (W x D x H):** 1,500 x 1,000 x 2,260 mm
  - ▶ **Internal dimensions (W x D x H):** 1,033 x 900 x 1,986 mm
- |                               |                |
|-------------------------------|----------------|
| UHF-Box with one double door  | Item no. 21595 |
| UHF-Box with two double doors | Item no. 21832 |

### UHF Box L suitable for Euro pallets

- ▶ **External dimensions (W x D x H):** 1,500 x 1,500 x 2,260 mm
  - ▶ **Internal dimensions (W x D x H):** 1,033 x 1,400 x 1,986 mm
- |                               |                |
|-------------------------------|----------------|
| UHF box with one double door  | Item no. 21000 |
| UHF box with two double doors | Item no. 21822 |



UHF Box XL suitable for Euro pallets including pallet jack access

- ▶ **External dimensions (W x D x H):** 1,500 x 1,900 x 2,260 mm
  - ▶ **Internal dimensions (W x D x H):** 1,033 x 1,800 x 1,986 mm
- |                               |                |
|-------------------------------|----------------|
| UHF-Box with one double door  | Item no. 21833 |
| UHF-Box with two double doors | Item no. 21834 |

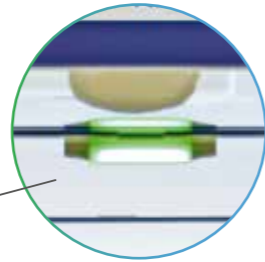
More information about the UHF gate available on request  
Item no. 21587

# UHF GATE

Suitable for bulk reading

- ▶ For bulk reading of various types of laundry in the trolley (e.g. mops, bathrobes, dust control mats, flat linen, workwear, contract laundry)
- ▶ Reading during passage through the gate
- ▶ Prevents losses, resulting in cost savings
- ▶ For identification and tracking of trolleys and transport equipment
- ▶ Can be used in addition to HF and LF technology

For reading during passage



Status indicator for reading status  
green = "counting process completed"

### General data

- ▶ Application area: Container identification in laundry intake (limited in laundry dispatch)
- ▶ Transponder use: All UHF transponders
- ▶ Reading: Bulk reading
- ▶ Interface: Ethernet, USB, RS-232
- ▶ Fast reader control technology with intelligent antenna illumination ensures time-optimized detection
- ▶ High container throughput thanks to intelligent light indicator
- ▶ Suitable for Euro pallets

### Technical data

- ▶ External dimensions (W x H x D):  
1,500 x 2,260 x 1,900 mm
- ▶ Internal dimensions (W x H x D):  
1,033 x 1,986 x 1,800 mm

Item no. 21587

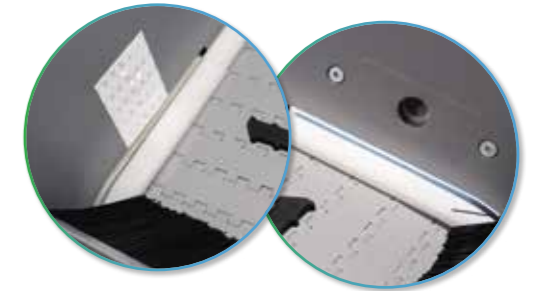
UHF conveyor with fixed shelf antenna

# UHF-SYSTEM FIX SHELF

UHF special constructions, for example UHF inclined conveyor



The inclined conveyor is a transport belt for transfer to a loading conveyor while simultaneously detecting the laundry items. The laundry item including the transponder is read loosely in transit by the antenna and passed on to the next processing station.



### Optional

Light sensor barrier for the automatic start of the conveyor belt

# UHF PICKING TROLLEY

The mobile and stationary solution

### ▶ The illustrated system includes:

- UHF antenna
- UHF reader
- Power strip, 4-way
- PC mounting bracket
- 2 fixed and swivel castors with brake, Ø125 mm, rubber-coated

<b>Areas of application</b>	At various stages of the process, mobile or stationary
<b>Dimensions (L x W x H)</b>	600 x 600 x 1400 mm
<b>Interface</b>	USB HID, USB Virtuall-Com, RS232, Ethernet
<b>Transponder</b>	All UHF transponders

Item no. 20488



More Information:

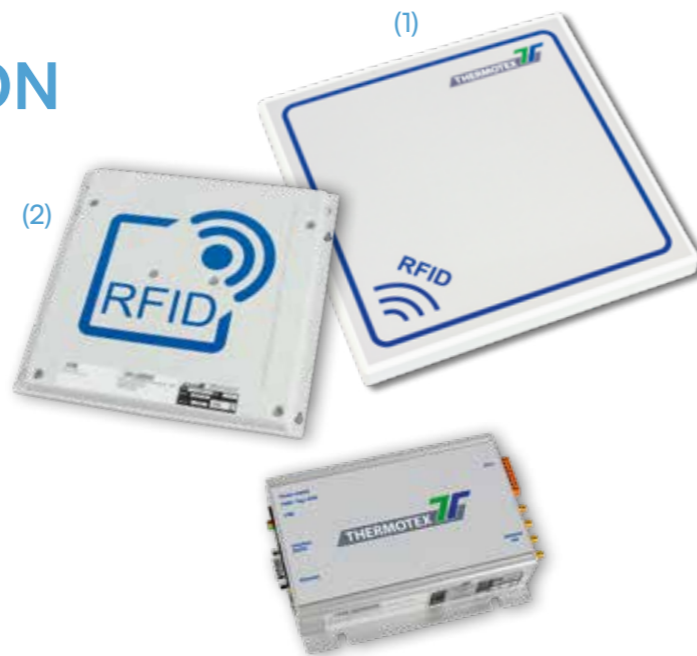


## UHF-SYSTEM SHELF: THE FLEXIBLE SOLUTION

With our shelf antenna, no requirement goes unmet. Whether in a standard system or a custom-built solution — you'll find exactly what you need here!

<b>Application area</b>	Desk workstation
<b>Reading method</b>	Single and stacked reading
<b>Transponder types</b>	All UHF transponders
<b>Antenna dimensions (LxWxH)</b>	400 x 400 x 30 mm
<b>Interface</b>	USB, optional: Ethernet, RS232

Shelf (1) Item no. 22276  
 Fix Shelf (2) Item no. 21689



## UHF-SYSTEM LONG-RANGE UNIVERSAL

And industrial solution Universal I



**Capture entire rooms:**  
 Stationary scanning of chipped textiles and objects is a thing of the past. Use our UHF Long-Range Universal system to identify entire rooms. Depending on the application — for example, in industrial environments — up to 8 antennas can be connected to the control cabinet.

### Universal unit in control cabinet

For industrial use with up to eight antennas

- ▶ Up to 4 antennas can be connected in the standard system
- ▶ Enables room-level identification
- ▶ Special industrial solution: 4 to 8 external SAT antennas (depending on application) with Universal I control cabinet
- ▶ Standard system consists of:
  - UHF long-range reader
  - 1 to 4 external SAT antennas (depending on application)
- ▶ UHF long-range reader integrated into the control cabinet

<b>Application area</b>	Flexible integration into laundry processes
<b>Reading method</b>	Single, stacked, and bulk reading
<b>Transponder types</b>	Compatible with all UHF transponders
<b>Antenna dimensions (LxWxH)</b>	130 x 130 x 39 mm
<b>Interface</b>	USB, Ethernet, RS232

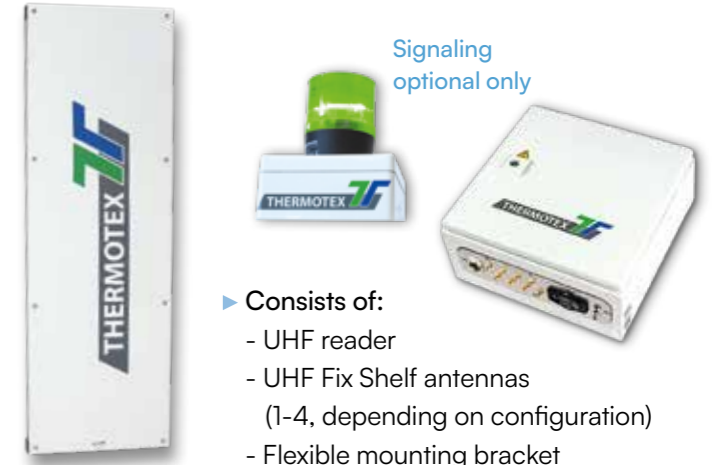


## UHF IRONING STATION FIX SHELF

For sorting units

<b>Application area</b>	For reading hanging garments in a conveyor system
<b>Reading method</b>	Single and stacked reading
<b>Transponder types</b>	All UHF transponders
<b>Antenna dimensions (LxWxH)</b>	1,472 x 10 x 486mm (Housing independent of number of antennas)
<b>Interface</b>	Ethernet

Item no. 23820



Identification of hanging garments

Signaling optional only

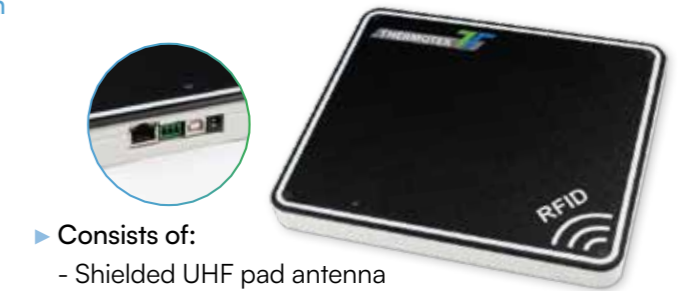
- ▶ Consists of:
- UHF reader
  - UHF Fix Shelf antennas (1-4, depending on configuration)
  - Flexible mounting bracket

## UHF-SYSTEM COMPACT PLUS

Desk workstation for laundry sorting in laundry dispatch

<b>Application area</b>	Desk workstation for laundry sorting in laundry dispatch or for intermediate inspection during the process
<b>Reading method</b>	Single reading, limited stacked reading
<b>Transponder types</b>	All UHF transponders
<b>Antenna dimensions (LxWxH)</b>	310 x 260 x 30.5 mm
<b>Interface</b>	Ethernet, USB, RS-232

Item no. 22488



- ▶ Consists of:
- Shielded UHF pad antenna
  - USB cable
  - Power supply

## BLUETOOTH TSL 2128P

- ▶ Application areas: Mobile data capture, intermediate control, verification, inventory
- ▶ Reading method: Single and stacked reading
- ▶ Transponders: All UHF transponders, optionally: 2D barcode capture
- ▶ Dimensions (W x H x D): 98 x 170 x 158 mm
- ▶ Weight: 445 g
- ▶ Interface: Bluetooth virtuell COM, Bluetooth HID
- ▶ Power supply: Battery-powered
- ▶ Reading range:
  - UHF: up to 9 m | Barcode: up to 90 cm

Bluetooth TSL 2128P Item no. 23061  
 2D-Bluetooth TSL 2128P Item no. 23058








# TRANSPONDER

7, 11, 16 mm according to DIN ISO 15693

- ▶ For fully automated identification of textiles
- ▶ With unique identification number (“UID”)
- ▶ Single, stacked, and bulk reading
- ▶ For heat-sealing (with heat-seal material) or sewing in (with woven pouches)
- ▶ Suitable for industrial ironing
- ▶ Industrial-wash resistant

For maximum mechanical stress



Article	HF I-Transponder Ø 7 mm 	HF I-Transponder Ø 11 mm 	HF I-Transponder Ø 16 mm 	HF I-Transponder Ø 16 mm 
<b>Applications</b>	Residents' laundry	Residents' laundry, workwear, flat linen	Workwear, mops / dusters, flat linen, bathrobes, towels etc.	Workwear, mops / dusters, flat linen, bathrobes, towels etc.
<b>Reading</b>	Single	Single, pile	Single, pile, bulk, tunnel	Single, pile, bulk, tunnel
<b>Thickness</b>	2.0 mm	2.4 mm	2.8 mm	2.8 mm
<b>Reading distance</b>	up to 16 cm	up to 28 cm	up to 42 cm	up to 42 cm
<b>Laser engraved</b>	No	No	No	Yes (customer-specific logo possible)

Item no. 64336

Item no. 62236

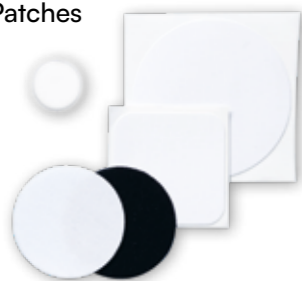
Item no. 64445

Item no. 64446

# TRANSPONDER ATTACHMENT

Patches, labels, and woven transponder pouches

## ▶ Haftex Patches



Format	Item no.
x (Ø 25 mm)	61680
x (Ø 50 mm)	58434
x (35 x 35 mm)	58034

Additional formats available on request



## ▶ Self-adhesive labels

- These labels allow for pre-positioning and precise alignment of the transponder underneath the label before heat-sealing.

Quality	Format	Labels	Item no.
Fixtexx 2026	84 x 23.4 mm	~ 2,000	56942
Fixtexx 2026	84 x 36.1 mm	~ 1,300	56941
Fixtexx 2041	53 x 19 mm	~ 2,300	65431
Roll length: 50 m			
Fixtexx 2026	53 x 32 mm	~ 710	FX2026-53x3225
Fixtexx 2041	53 x 32 mm	~ 710	FX2041-53x3225

Additional formats available on request

# WOVEN TRANSPONDER POUCHES



<b>Versions</b>	Available blank or with woven-in design, with or without transponder
<b>Transponder</b>	Max. 16 mm
<b>Material</b>	Polyester
<b>Dimensions (W x H)</b>	24 x 40 mm (standard format)

Item no. 62218

Additional formats and versions available on request

# PATCH DISPENSER AND HAFTEX PATCHES



- ▶ With the patch dispenser, your transponder patches are always within reach. Self-adhesive patches enable efficient working.

Haftex-Patches	Format	Item no.
1,000 labels per roll	Rectangular, 35 x 35 mm	58034
1,000 labels per roll	Round, Ø 50 mm	58434

Patch dispenser

Item no. 15627

# TRANSPORT CONTAINER LABELING



Additional formats and versions available on request

- ▶ For plastic transport containers
- ▶ Suitable for cleaning gates

<b>Printing method</b>	Thermal transfer
<b>Type</b>	HF, ISO 15693, ICode SLI
<b>Material</b>	White PET, blank
<b>Adhesive</b>	Permanent
<b>Presentation</b>	On roll
<b>Dimensions (W x H)</b>	50 x 50 mm, single-lane

Item no. 63866

## HF-SYSTEM COMPACT PLUS



- ▶ Top surface made of antistatic material
- ▶ Specifically designed for metal tables
- ▶ Integrated LED indicates operating status

<b>Application areas</b>	Desk workstation for laundry sorting in laundry dispatch or for intermediate process control		
<b>Reading method</b>	Single reading, limited stacked reading		
<b>Transponder size (in mm) and reading range</b>	0 - 7 cm ●	0 - 12 cm ●	0 - 15 cm ●
<b>Antenna dimensions (LxWxH)</b>	310 x 260 x 30.5 mm		
<b>Reader dimensions</b>	Integrated in antenna		
<b>Interface</b>	Ethernet, USB, RS-232		

Item no. 23320

## HF-SYSTEM LONG-RANGE TABLE



- ▶ The system shown includes:
  - HF industrial reader
  - HF antenna

<b>Application areas</b>	Resident laundry, workwear, mops / cleaning cloths, bathrobes, towels, and more		
<b>Reading method</b>	Single and stacked reading		
<b>Transponder size (in mm) and reading range</b>	0 - 16 cm ●	0 - 28 cm ●	0 - 42 cm ●
<b>Antenna dimensions (LxWxH)</b>	430 x 450 x 25 mm		
<b>Reader dimensions</b>	420 x 200 x 120 mm		
<b>Interface</b>	RS232, Ethernet, USB		

Item no. 21476

## HF-SYSTEM MID-RANGE TABLE



- ▶ The system shown includes:
  - HF reader
  - HF antenna
- ▶ Also available as an under-table system

<b>Application areas</b>	Resident laundry, workwear, mops / cleaning cloths, bathrobes, towels, and much more		
<b>Reading method</b>	Single and stacked reading		
<b>Transponder size (in mm) and reading range</b>	0 - 5 cm ●	0 - 15 cm ●	0 - 20 cm ●
<b>Antenna dimensions (LxWxH)</b>	300 x 250 x 12 mm		
<b>Reader dimensions</b>	170 x 105 x 45 mm		
<b>Interface</b>	RS232, Ethernet, USB		

Item no. 18533

## HF-SYSTEM LONG-RANGE LOOP



- ▶ The system shown includes:
  - HF reader
  - HF antenna

<b>Application areas</b>	Resident laundry, workwear, mops / cleaning cloths, bathrobes, towels, and much more		
<b>Reading method</b>	Single and stacked reading		
<b>Transponder size (in mm) and reading range</b>	0 - 16 cm ●	0 - 28 cm ●	0 - 42 cm ●
<b>Antenna dimensions (LxWxH)</b>	430 x 450 x 23 mm		
<b>Reader dimensions</b>	420 x 200 x 120 mm		
<b>Interface</b>	RS232, Ethernet, USB		

Item no. 17274

## HF-SYSTEM MID-RANGE LOOP



- ▶ The system shown includes:
  - HF reader
  - HF antenna
- ▶ Also available as an under-table system

<b>Application areas</b>	Workwear, mops / cleaning cloths, bathrobes, towels, and much more		
<b>Reading method</b>	Single and stacked reading		
<b>Transponder size (in mm) and reading range</b>	- ●	0 - 13 cm ●	0 - 28 cm ●
<b>Antenna dimensions (LxWxH)</b>	430 x 450 x 23 mm		
<b>Reader dimensions</b>	170 x 105 x 45 mm		
<b>Interface</b>	RS232, Ethernet, USB		

Item no. 17027

## HF-/UHF-SYSTEM COMPACT PLUS



- ▶ Top surface made of antistatic material
- ▶ Specifically designed for metal tables
- ▶ Integrated LED indicates operating status

<b>Application areas</b>	Desk workstation for laundry sorting in laundry dispatch or for intermediate process control		
<b>Reading method</b>	Single reading, limited stacked reading		
<b>Transponder size (in mm) and reading range</b>	0 - 6 cm ●	0 - 12 cm ●	0 - 15 cm ●
<b>Antenna dimensions (LxWxH)</b>	310 x 260 x 30.5 mm		
<b>Reader dimensions</b>	Integrated into the antenna		
<b>Interface</b>	Ethernet, USB, RS-232		

Item no. 23127

## HF-SYSTEM LONG-RANGE-PANEL

- ▶ With flexible mounting bracket
- ▶ For reading hanging garments in a conveyor system
- ▶ The system shown (1) includes:
  - HF industrial reader
  - HF antenna
- ▶ Suitable for pressing stations and folding robots (4)
- ▶ The system shown includes either:
  - Mounting bracket with 4 adjustable feet (3), or
  - Floor bracket with adjustable tilt angle (2)

<b>Application areas</b>	Sorting systems or single reading stations
<b>Multi-tag</b>	Compatible
<b>Dimensions (LxWxH)</b>	1,150 x 280 x 30 mm
<b>Interface</b>	RS232, Ethernet, USB

- 1 HF-System Long-Range-Panel Item no. 17275
- 2 Floor stand for panel Item no. 20145
- 3 Base stand for panel Item no. 19840
- 4 Mounting bracket for pressing station Item no. 21221



## HF PICKING TROLLEY



- ▶ **Advantages of the picking trolley**
  - Mobility and flexibility
  - Robust design with mounting options for notebooks or all-in-one touchscreen systems
  - Integration of RFID reader systems in HF, UHF, or as a hybrid solution
  - Configurable and adaptable to customer requirements (custom-built)
  - Optional: Standalone operation possible through integration of UPS units with ACD Powerack 250V / 60Ah — 300W
  - Optional: Preconfigured, fanless all-in-one touchscreen system
- ▶ **The system shown includes:**
  - Loop antenna
  - Industrial reader
  - 4-socket power strip
  - PC mounting bracket
  - Two fixed and swivel castors with brakes, Ø 125 mm, rubberized

Also available as UHF version and custom-built solution

<b>Application areas</b>	At various stages of the process, mobile or stationary
<b>Dimensions (LxWxH)</b>	600 x 600 x 1,400 mm
<b>Interface</b>	USB HID, USB Virtuell-Com, RS232, Ethernet

Item no. 18260

More Information:



## HF SYSTEM TUNNEL ANTENNA

With conveyor belt

- ▶ Ideal for integration into existing conveyor systems
- ▶ Reading of entire packages, bags, or laundry stacks
- ▶ Significant time savings
- ▶ 100 % reliability
- ▶ The system shown includes:
  - Tunnel antenna, conveyor with belt mat
  - Long-range reader, antenna multiplexer
  - Control unit with frequency converter
  - Adjustable belt speed up to 13 m/min

<b>Application areas</b>	Workwear, mops / cleaning cloths, bathrobes, towels, and much more
<b>Reading method</b>	Stacked reading, bulk detection (bags, stacks, individual items)
<b>Transponder size</b>	16 mm
<b>External dimensions Tunnel (LxWxH)</b>	800 x 550 x 550 mm
<b>Tunnel opening</b>	1,904 x 710 x 1,361 mm
<b>Interface</b>	Ethernet, optional: RS232, USB

Item no. 17858



### HF Reader Systems

Our innovative HF reader systems are built to the highest technical standards and, in combination with suitable transponders, ensure optimal laundry identification. Entire packages, bags, or laundry stacks can be read within seconds — delivering significant time savings!

### Custom-built solutions

Custom-built systems from THERMOTEX are tailored to specific processes and individual customer requirements. They are ideal for integration into existing conveyor systems and are manufactured to your exact specifications.

## INCLINE CONVEYORS

- ▶ Two systems in one: The incline conveyor is a transport belt for transferring items to a batch loading belt while simultaneously reading the laundry items.
- ▶ The laundry item, including the transponder, is read by the antenna either in a transport bag or loose as it passes through, and is then transferred to the next processing station.
- ▶ The system shown includes:
  - Belt mat conveyor with ergonomic loading funnel and side guides
  - HF long-range reading system
  - Control cabinet with operating elements



Individually tailored to customer requirements



**THERMOTEX NAGEL GmbH**

Phone +49 781 96 16 - 0  
Fax +49 781 96 16 - 50  
Schutterstraße 14  
77746 Schutterwald / D  
[www.thermo-tex.de](http://www.thermo-tex.de)

**THERMOTEX EUROPE AG**

Phone +41 61 75 19 - 100  
Fax +41 61 75 19 - 101  
Langenhagstraße 13  
4147 Aesch / CH  
[www.thermo-tex.ch](http://www.thermo-tex.ch)