

# FIRE BRIGADE & EMERGENCY SERVICES



**THERMOTEX**   
MARKING THE FUTURE

Labeling, Identification & Finishing



# CLEAR LABELING, CLEAR SAFETY

Further Information:



### Heat and Flames

Materials with high temperature resistance ensure that clothing can withstand extreme heat exposure.



### Chemical Substances

Special protective coatings act as a barrier against hazardous chemicals.



### Mechanical Impact

Reinforcements and durable seams prevent sharp objects from penetrating.

## Challenges and Solutions in Textile Labeling

Labeling protective clothing presents a unique set of challenges. Labels and prints must be heat-resistant, abrasion-proof, and resistant to chemicals. This requires the use of specialized materials and processes. This is where innovative solutions come into play — such as those developed by THERMOTEX.

THERMOTEX relies on advanced labeling systems that ensure long-term durability of labels. By using high-performance printers and special transfer foils, labels can be produced that remain clearly readable even after numerous uses and wash cycles. This is especially important for the safety of personnel, as it ensures that protective clothing is used and maintained properly.

### Innovative Textile Labeling

The demands on personal protective clothing have steadily increased in recent years. Firefighters, emergency personnel, and industrial workers who face high risks on a daily basis require reliable and durable equipment that offers them optimal protection. In this context, not only the quality of the materials plays a crucial role, but also the precise and permanent labeling of garments. Such labeling ensures that the protective clothing complies with strict regulations and remains traceable at all times.



### Labeling: More Than Just a Tag

Labeling personal protective clothing is more than simply adding a name tag. It serves as proof of compliance with safety standards and provides information on care instructions, manufacturer details, and individual identification numbers. This labeling must remain readable and durable under the extreme conditions the clothing is exposed to. Modern technologies such as **thermal transfer printers**, **RFID tags**, **high-resistance labels**, and **emblems** offer innovative solutions in this area.

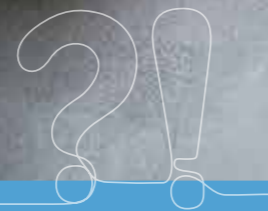
### Did you know

that protective clothing often requires special cleaning cycles?

Regular washing with specific detergents is essential to maintain the protective function of the textiles and to remove residues of harmful substances.



So durable — yet so easy!  
Apply your labels to garments as usual. After application, the CT 4000 also proves its durability in industrial laundering.



**Protective clothing, straps, or hoses?**

Label your team's equipment using our labels and name emblems. We offer the right solutions for creating, printing, and applying your labels — ensuring clear and reliable identification of textiles and inventory.

## CT 4000

For robust and flame-retardant labels

- ▶ Flame-retardant, very robust
- ▶ Industrial wash resistant
- ▶ Not suitable for ironing
- ▶ Version: continuous
- ▶ Roll length: 50 m
- ▶ No OEKO-TEX® certification



Available as pre-printed barcode labels!

## FIXTEXX 2009

Die-cut, self-adhesive and unprinted label

- ▶ Thin, elastic and soft
- ▶ Without fabric backing
- ▶ Industrial wash resistant
- ▶ OEKO-TEX® Standard 100 certified



Possible formats:

| Format       | 12,5 m Roll | Item No. | 25 m Roll    | Item No. | 50 m Roll    | Item No. |
|--------------|-------------|----------|--------------|----------|--------------|----------|
| 41 x 14.4 mm | 730 Labels  | 65844    | 1,470 Labels | 65866    | 2,950 Labels | 65843    |
| 53 x 19.0 mm | 570 Labels  | 65846    | 1,150 Labels | 65867    | 2,300 Labels | 65845 *  |
| 58 x 14.4 mm | 730 Labels  | 66114    | 1,470 Labels | 66119    | 2,950 Labels | 65950    |

## FIXTEXX 2026

Die-cut, self-adhesive and unprinted label

- ▶ Robust and durable
- ▶ Highly resistant to industrial washing
- ▶ OEKO-TEX® Standard 100 certified



Possible formats:

| Format       | 12.5 m Roll | Item no. | 25 m Roll    | Item no. | 50 m Roll    | Item no. |
|--------------|-------------|----------|--------------|----------|--------------|----------|
| 41 x 14.4 mm | 730 Labels  | 60391    | 1,450 Labels | 57366    | 2,950 Labels | 56938    |
| 53 x 19.0 mm | 570 Labels  | 60392    | 1,150 Labels | 57367    | 2,300 Labels | 56939 *  |
| 58 x 14.4 mm | -           | -        | 1,450 Labels | 57371    | 2,950 Labels | 56940    |

\*Our recommendation for you

## RIBBON INK

Matched to your label material

- ▶ For optimal print results, a precisely matched combination of printers, label material, and ribbons is essential.

We help you select the optimal ribbon!



## FILM ADHESIVE LABELS

SK-material

- ▶ Application area: nameplates, inventory management, etc.
- ▶ Barcodes, additional text, graphics, and logos possible
- ▶ Versions: die-cut or continuous, printed or unprinted
- ▶ Available in various roll formats
- ▶ Available in two different quality levels



| Quality   | Properties  |
|-----------|---|
| SK 2005   | Silver, strong adhesive, improved surface structure, highly abrasion-resistant              |
| SK 2006 * | White, strong adhesive, improved surface structure, highly abrasion-resistant, splash-proof |

Possible formats (in mm):

|         |         |         |
|---------|---------|---------|
| 30 x 8  | 50 x 25 | 68 x 34 |
| 30 x 15 |         |         |
| 30 x 25 |         |         |



\*Our recommendation for you

## NAME EMBLEMS

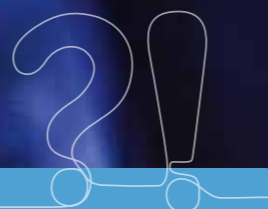
Different versions and small quantities possible

| Version                         | Printing                  |
|---------------------------------|---------------------------|
| Professional name labels        | Single-colour black       |
| Tex name labels                 | All colours printable     |
| Tex low-temperature name labels | All colours printable     |
| Fixtexx name labels             | Single-colour black       |
| Plotter name labels             | Various standard colours  |
| Embroidered name labels         | Various colours available |
| Sublimation name labels         | All colours possible      |
| FTC name labels                 | In 8 standard colours     |



Turn your clothing into your textile fingerprint with your name emblem on the chest.





**A service that pays off!**

Whether reflective emblems or multicolored flame-retardant emblems — you get everything from a single source. With our complete solutions, we support you every step of the way: take advantage of our graphic services and the full contract patching service.

The result: your desired textiles, fully patched and ready to use with your emblems.

# GUARANTEED TO BE AN EYE-CATCHER

With three different effect emblem variants, customers are spoiled for choice. The fluorescent effect emblem impresses with vibrant daylight fluorescent colours in orange, red, green, and yellow. Under UV light, the luminosity is intensified, making the colours glow especially brightly under blacklight. As another option, the reflective effect emblem makes brilliant colours shine, though it is not compliant with EN ISO 20471. The third variant combines fluorescent and reflective properties, allowing the emblem to glow and reflect at the same time.

## EFFECT EMBLEMS (EE)

### FLUORESCENT

- ▶ Daylight fluorescent colours in red, orange, green and yellow
- ▶ Strong luminous effect under black light
- ▶ Particularly suitable for design effects



### REFLEKTIVE

- ▶ Surface completely reflective
- ▶ Not according to EN ISO 20471



### COMBINED

- ▶ Combines the effects of fluorescent and reflective into a real eye-catcher



|                      |  |
|----------------------|--|
| Areas of application | Workwear, polo shirts, softshell, sportswear and leisurewear, sweatshirt, T-shirts |
| Motifs               | Freestanding shapes possible (No colour gradient possible)                         |
| Opacity              | High   |
| Removable            | No   |
| Carrier              | Transparent film   |
| Printing process     | Screen printing  |



## FTC EMBLEMS (FT)

Premium emblem — available in 3 versions

- ▶ Standard (FT)
  - Emblem for non-sublimating textiles
- ▶ Dye-Blocking Emblems (DB)
  - Prevents dye migration from the textile into the emblem
  - Ideal for fabrics that release dye during heat-sealing (e.g., softshell)
- ▶ FTC Flame-Retardant Emblems (FH)
  - For protective workwear (heat protection)
  - Safety clothing
  - Protective garments (e.g., for welding)

|                              |   |
|------------------------------|---|
| <b>Areas of application</b>  | Workwear, polo shirts, softshell, sports and leisurewear, sweatshirts, T-shirts |
| <b>Motifs</b>                | Freestanding motifs possible (no colour gradients)                              |
| <b>Colour</b>                | All colours available according to Pantone C, HKS K, RAL                        |
| <b>Coverage</b>              | High  |
| <b>Heat-seal temperature</b> | 130° - 180°C  |
| <b>Wash resistance</b>       | Suitable for industrial laundering (depending on heat-sealing temperature)      |
| <b>Removable</b>             | No  |
| <b>Carrier</b>               | Transparent Film  |
| <b>Printing method</b>       | Screen printing   |

## MULTICOLOUR EMBLEMS (MC)

Images and gradients with exact colour reproduction

- ▶ Available in 3 versions
  - Standard (MC); Dye-blocking (MC DB); Flame-retardant (MC FH, MC FH DB)



|                              |  |
|------------------------------|--|
| <b>Areas of application</b>  | Workwear, polo shirts, sportswear and leisurewear, sweatshirts, T-shirts, for true colour gradients and images |
| <b>Motifs</b>                | Freestanding shapes possible   |
| <b>Colour</b>                | Images, colour gradients, all colours according to Pantone C, HKS K  |
| <b>Opacity</b>               | Very high  |
| <b>Heat-seal temperature</b> | 130° - 180°C   |
| <b>Removable</b>             | No   |
| <b>Wash resistance</b>       | Suitable for industrial washing (depending on the heat-seal temperature)                                       |
| <b>Carrier</b>               | Transparent film   |
| <b>Printing process</b>      | Combination of screen and digital printing   |

## REFLEX EMBLEM PLOTTER (RP)

For protective clothing and optimum reflection values according to EN ISO 20471

- ▶ Available in 5 versions
  - Silver reflective / standard (RP)
  - Silver reflective / 3M 5807 (RP/3M)
  - Silver reflective / flame-retardant (RP/FH)
  - Silver reflective / industrial washing (RP/IW)
  - Yellow reflective / flame-retardant (RP/GE)

|                              |   |
|------------------------------|---|
| <b>Areas of application</b>  | Protective workwear and other protective clothing, workwear, fire brigade, police, especially for rescue services |
| <b>Motifs</b>                | Freestanding shapes possible (logos, motifs, lettering)   |
| <b>Colour</b>                | Single-colour: silver or yellow reflective  |
| <b>Opacity</b>               | Very good   |
| <b>Heat-seal temperature</b> | 140°C - 165°C (depending on the version)  |
| <b>Removable</b>             | No  |
| <b>Wash resistance</b>       | Industrial washing up to 60 °C<br>Industrial washing up to 75 °C (version RP/IW)                                  |
| <b>Printing process</b>      | Transparent film  |



Does your emblem need to withstand certain conditions? Here you will find a list of all standards that our emblems comply with!



## REFLEX EMBLEMS FILM (RF)

Reflective logos for maximum visibility — without compromises in corporate design

|                              |  |
|------------------------------|--|
| <b>Areas of application</b>  | Workwear, protective clothing, sportswear and leisurewear, textile promotional items   |
| <b>Motifs</b>                | Freestanding motifs possible / lettering with a minimum line thickness of 3 mm possible  |
| <b>Colour</b>                | Silver = silver reflective according to DIN ISO 20471, printable in screen printing single- or multicolour, no colour gradients possible |
| <b>Opacity</b>               | Very high  |
| <b>Heat-seal temperature</b> | 140°C - 150°C  |
| <b>Removable</b>             | No   |
| <b>Wash resistance</b>       | Up to 60°C   |
| <b>Printing process</b>      | Screen printing, plotted   |

## SUBLIMATION EMBLEMS (SB)

Cost-effective alternative to the embroidery emblem, available with name imprint

► Available in 2 versions

- With embroidered border for heat-sealing or sewing on
- Without embroidered border for heat-sealing (excellent print and colour quality, particularly durable, 100% polyester)



|                              |   |
|------------------------------|---|
| <b>Areas of application</b>  | Protective workwear, workwear, rental workwear, sportswear and leisurewear      |
| <b>Motifs</b>                | No completely freestanding motifs possible                                      |
| <b>Colour</b>                | All colours printable according to bitmap, including colour gradients or images |
| <b>Opacity</b>               | High  |
| <b>Heat-seal temperature</b> | 204°C   |
| <b>Removable</b>             | Yes, with adhesive residue  |
| <b>Wash resistance</b>       | Industrial washing up to 85 °C  |
| <b>Printing process</b>      | Sublimation printing  |

Without embroidered border

With embroidered border



## CHEST PENDANT & ASSOCIATION BADGE

For club crests, city crests or state crests

► Components:

- Chest pendant and sublimation emblem with embroidered border

► Format chest pendant:

- Standard: 7 cm x 13 cm (B x H)

► Format sublimation emblem:

- Standard: 7 cm x 9 cm (B x H)

► Further formats on request

With our chest pendants or association badges, you receive your crest in top quality on a shield-like backing. Attach your badge to the button of the breast pocket of your uniform.



**Optimal look**

Sublimation emblem with embroidered border

## EMBROIDERED EMBLEMS (S)

Made of colourfast polyester yarn



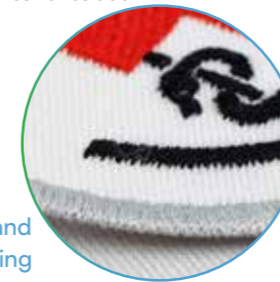
► Properties:

- Raised, elegant surface
- For heat-sealing or sewing on
- Particularly durable
- Possible as direct embroidery
- Possible with Nomex yarn (for protective and flame-retardant clothing)

|                             |  |
|-----------------------------|--|
| <b>Areas of application</b> | Protective workwear, workwear, rental workwear, sportswear and leisurewear |
| <b>Colour</b>               | Colour according to embroidery yarn colour chart                           |
| <b>Opacity</b>              | Excellent  |
| <b>Removeable</b>           | Yes, with little adhesive residue  |



For sewing and for heat sealing



## DIGITAL EMBLEMS (DI)

|                            |   |
|----------------------------|---|
| <b>Area of application</b> | Protective workwear, workwear, rental textiles, sportswear and leisurewear, sweatshirts, T-shirts |
| <b>Motifs</b>              | No completely freestanding motifs possible  |
| <b>Colour</b>              | All colours printable according to bitmap, including colour gradients or images                   |
| <b>Opacity</b>             | Very high   |
| <b>Removeable</b>          | No  |
| <b>Printing process</b>    | Digital printing  |



## TEX EMBLEMS (TE)

Textile look, very durable



► Properties:

- Thin textile label, non-stretchable, very robust
- Highly durable against mechanical impact
- Available with name imprint
- For sensitive textiles

|                             |   |
|-----------------------------|---|
| <b>Areas of application</b> | Protective workwear, workwear, rental textiles, sportswear and leisurewear, sweatshirts, T-shirts |
| <b>Motifs</b>               | No completely freestanding motifs possible  |
| <b>Colour</b>               | All colours according to Pantone C, HKS K, RAL, including colour gradients or images              |
| <b>Opacity</b>              | High  |
| <b>Removeable</b>           | Yes, with little adhesive residue   |
| <b>Printing process</b>     | Digital printing  |

Textile look



Suitable for both small and large quantities, available with name imprint

- CT 4000 — very robust textile label, flame-retardant, suitable for PPE clothing, no OEKO-Tex® certificate

Your worry-free package

## OUR SERVICES IN TEXTILE FINISHING

So you don't have to worry about a thing: You place the order — we handle the heat-sealing, reliably and professionally!

On request:

- Heat-sealing of emblems
- Direct embroidery
- Use of customer-provided textiles or garments from our own textile portfolio



## UHF Transponders

are industrial laundry resistant and suitable for ironing!

### F10 58 x 18.5 mm • Thickness: 0.5 mm < 2.5 mm in chip area



| Article | Blank<br>Item no. 67631 | With EPC number<br>Item no. 67582 | With logo and EPC number<br>Item no. 67966 | With Barcode<br>Item no. 67967 | With logo<br>Item no. 67632 |
|---------|-------------------------|-----------------------------------|--|--------------------------------|-----------------------------|
|---------|-------------------------|-----------------------------------|--|--------------------------------|-----------------------------|

- ▶ **Application areas:** Tracking of workwear, flat linen, and institutional laundry, e.g., in laundry intake/dispatch or cabinet and room inventory
- ▶ **Reading method:** Bulk reading, e.g., in mesh trolleys
- ▶ **Reading range:** Up to 6 meters
- ▶ **Compatibility:** All common UHF reading systems such as Box, Gate, Shelf, Fix Shelf, Universal, Compact, TSL
- ▶ **Application method:** Sewing in / heat-sealing



Illustration at original size

Accessory:

## WOVEN TRANSPONDER POUCH

- ▶ Thermal transfer printable
- ▶ Adhesive: permanent
- ▶ Material: white PET, blank
- ▶ Format: on roll



Formats and versions available on request

For F10 woven transponder pouch Item no. 67992

## UHF SELF-ADHESIVE LABELS

- ▶ Thermal transfer printable
- ▶ Adhesive: permanent
- ▶ Material: white PET, blank
- ▶ Format: on roll



Formats and versions available on request

## UHF-SYSTEM SHELF

The flexible solution

|                                   |                                |
|-----------------------------------|--------------------------------|
| <b>Application area</b>           | Desk workstation               |
| <b>Reading method</b>             | Single and stacked reading     |
| <b>Transponder types</b>          | All UHF transponders           |
| <b>Antenna dimensions (LxWxH)</b> | 400 x 400 x 30 mm              |
| <b>Interface</b>                  | USB, optional: Ethernet, RS232 |

Art.-Nr. 22276

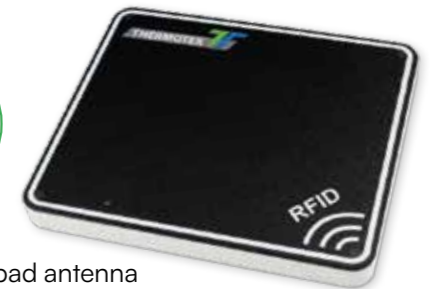


## UHF-SYSTEM COMPACT PLUS

Desk workstation for laundry sorting in laundry dispatch

|                                   |  |
|-----------------------------------|--|
| <b>Application area</b>           | Desk workstation for laundry sorting in laundry dispatch or for intermediate inspection during the process |
| <b>Reading method</b>             | Single reading, limited stacked reading  |
| <b>Transponder types</b>          | All UHF transponders   |
| <b>Antenna dimensions (LxWxH)</b> | 310 x 260 x 30.5 mm  |
| <b>Interface</b>                  | Ethernet, USB, RS-232  |

Item no. 22488



- ▶ **Consists of:**
  - Shielded UHF pad antenna
  - USB cable
  - Power supply

## MOBILE UHF BLUETOOTH READER

SKID-R1280IE

|                                      |  |
|--------------------------------------|--|
| <b>Reading method</b>                | Single reading, limited batch reading                                |
| <b>Transponder types</b>             | All UHF transponders   |
| <b>Reading distance</b>              | Up to one meter  |
| <b>Reader dimensions (W x H x D)</b> | 112 x 16 x 62 mm   |
| <b>Interface</b>                     | BT-HID as standard, BT-SPP (software-controlled only), USB 2.0 Typ C |

Item no. 23328



## BLUETOOTH TSL 2128P

- ▶ Application areas: Mobile data capture, intermediate control, verification, inventory
- ▶ Reading method: Single and stacked reading
- ▶ Transponders: All UHF transponders, optionally: 2D barcode capture
- ▶ Dimensions (WxHxD): 98 x 170 x 158 mm
- ▶ Weight: 445 g
- ▶ Interface: Bluetooth virtuell COM, Bluetooth HID
- ▶ Power supply: Battery-powered
- ▶ Reading range:
  - UHF: up to 9 m | Barcode: up to 90 cm

Bluetooth TSL 2128P Item no. 23061  
 2D-Bluetooth TSL 2128P Item no. 23058



For maximum mechanical stress!  
NFC detection possible.

## TRANSPONDER

|                         |  |  |
|-------------------------|--|--|
| <b>Article</b>          | HF I-Transponder<br>Ø 11 mm              | HF I-Transponder<br>Ø 16 mm                                  |
| <b>Applications</b>     | Residents' laundry, workwear, flat linen | Workwear, mops / dusters, flat linen, bathrobes, towels etc. |
| <b>Reading</b>          | Single, pile                             | Single, pile, bulk, tunnel                                   |
| <b>Thickness</b>        | 2.4 mm                                   | 2.8 mm   |
| <b>Reading distance</b> | up to 28 cm                              | up to 42 cm  |
| <b>Laser engraved</b>   | No                                       | No   |

Item no. 62236

Item no. 64445

## TRANSPONDER ATTACHMENT

Patches, labels, and woven transponder pouches



### ► Self-adhesive labels

- These labels allow for pre-positioning and precise alignment of the transponder underneath the label before heat-sealing.

| Quality      | Format     | Labels | Item no.       |
|--------------|------------|--------|----------------|
| Fixtexx 2026 | 53 x 32 mm | ~ 710  | FX2026-53x3225 |
| Fixtexx 2041 | 53 x 32 mm | ~ 710  | FX2041-53x3225 |

Roll length: 50 m

### ► Patches

- Standard quality patch
- P0703 (100% polyester), white

| Format         | Item no. |
|----------------|----------|
| Z (Ø 25 mm)    | PA0703Z  |
| W (Ø 50 mm)    | PA0703W  |
| C (35 x 35 mm) | PA0703C  |

### ► Woven transponder pouches

|                           |  |
|---------------------------|--|
| <b>Versions</b>           | Available blank or with woven-in design, with or without transponder |
| <b>Transponder</b>        | Max. 16 mm   |
| <b>Material</b>           | Polyester  |
| <b>Dimensions (W x H)</b> | 24 x 40 mm (standard format)   |



## HF-SYSTEM COMPACT PLUS

|   |  |           |           |
|---|--|-----------|-----------|
| <b>Application areas</b>                          | Desk workstation for laundry sorting in laundry dispatch or for intermediate process control |           |           |
| <b>Reading method</b>                             | Single reading, limited stacked reading  |           |           |
| <b>Transponder size (in mm) and reading range</b> | 0 - 7 cm   | 0 - 12 cm | 0 - 15 cm |
| <b>Antenna dimensions (L x W x H)</b>             | 310 x 260 x 30.5 mm  |           |           |
| <b>Reader dimensions</b>                          | Integrated in antenna  |           |           |
| <b>Interface</b>                                  | Ethernet, USB, RS-232  |           |           |

Item no. 23320



## HF-SYSTEM MID-RANGE LOOP

|                                   |  |           |
|-----------------------------------|--|-----------|
| <b>Application areas</b>          | Workwear, mops / cleaning cloths, bathrobes, towels, and much more |           |
| <b>Reading method</b>             | Single and stacked reading   |           |
| <b>Transponder size</b>           | Ø 11 mm  | Ø 16 mm   |
| <b>Reading range</b>              | 0 - 13 cm  | 0 - 28 cm |
| <b>Antenna dimensions (LxWxH)</b> | 430 x 450 x 23 mm  |           |
| <b>Reader dimensions</b>          | 170 x 105 x 45 mm  |           |
| <b>Interface</b>                  | RS232, Ethernet, USB   |           |

Item no. 17027



## PATCH DISPENSER AND HAFTEX PATCHES



- With the patch dispenser, your transponder patches are always within reach. Self-adhesive patches enable efficient working.

| Haftex-Patches        | Format                  | Item no. |
|-----------------------|-------------------------|----------|
| 1,000 labels per roll | Rectangular, 35 x 35 mm | 58034    |
| 1,000 labels per roll | Round, Ø 50 mm          | 58434    |

Patch dispenser

Item no. 15627

## TRANSPORT CONTAINER LABELING



Additional formats and versions available on request

- For plastic transport containers
- Suitable for cleaning gates

|                           |                          |
|---------------------------|--------------------------|
| <b>Printing method</b>    | Thermal transfer         |
| <b>Type</b>               | HF, ISO 15693, ICode SLI |
| <b>Material</b>           | White PET, blank         |
| <b>Adhesive</b>           | Permanent                |
| <b>Presentation</b>       | On roll                  |
| <b>Dimensions (W x H)</b> | 50 x 50 mm, single-lane  |

Item no. 63866



Further Information:



Barcode systems for your success

# PRECISION MEETS EFFICIENCY

Whether it's inventory control, laundry tracking, or stock management — with our modern scanner and barcode systems, you always stay in control. Durable, precise, and user-friendly, they ensure optimal data capture and management.

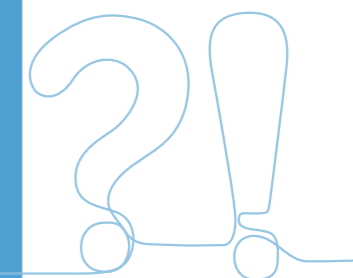
Thanks to their exceptional durability, flexible mounting options, and customizable design, they are the ideal solution for reliable identification and tracking.

## Barcode Labels

As unique as a fingerprint — barcodes give textiles and other items a distinct identity. They enable precise tracking of inventory, stock usage, and even the lifecycle of individual laundry items.

## Wireless Scanners

Prefer a wireless scanner? Our wireless models stand out for their high functionality and reliability.



We also handle the administration of your numbering ranges.

## BARCODES

Self-adhesive barcode labels, printed, Type SK



- ▶ Ideal for inventory management and labeling of transport trolleys and cabinets
- ▶ Additional texts, graphics, and logos possible
- ▶ Standard sizes (W x H): 35 x 25 mm, 50 x 25 mm, 68 x 34 mm

Custom formats available



## BARCODES

Barcode and data matrix code labels



- ▶ For heat-sealing or sewing
- ▶ Standard options: 6, 8, 10, or 12 digits (other formats available on request)
- ▶ Additional texts, graphics, and logos possible
- ▶ Supplied individually cut or on rolls
- ▶ Available in various dimensions and sizes (on request)

## BARCODES

Double woven barcode labels for sewing in

- ▶ Additional texts and logos can be integrated
- ▶ No changes after 100 wash cycles at 95 °C in alkaline solution (pH 10.5–11)
- ▶ Resistant to common bleaching agents and neutralization in inorganic acids
- ▶ Suitable for cleanroom use
- ▶ Tunnel drying at 180 °C
- ▶ Dry cleaning with organic solvents
- ▶ Supplied individually cut
- ▶ Standard size (W x H): 76 x 29 mm



- ▶ **Optional:**
  - With finish (refinement)
  - Labels on rolls for automatic processing
  - Labels with loop for temporary identification
  - Additional custom designs on request
  - For heat-sealing

Label size (width x height)

| Code Type       | 6-digit    | 8-digit    | 10-digit    | 12-digit    | Character representation          |
|-----------------|------------|------------|-------------|-------------|-----------------------------------|
| Data Matrix     | 52 x 29 mm | 52 x 29 mm | 52 x 29 mm  | 52 x 29 mm  | Letters, digits                   |
| Code 128 / C    | 76 x 29 mm | 86 x 29 mm | 95 x 29 mm  | 105 x 29 mm | Digits, even number of characters |
| Code 128 / AC   | 88 x 29 mm | 98 x 29 mm | 108 x 29 mm | 115 x 29 mm | Letters, digits                   |
| 2/5 Interleaved | 65 x 29 mm | 76 x 29 mm | 86 x 29 mm  | 98 x 29 mm  | Digits, even number of characters |

**When placing an order,** please specify the sequential number range (from...to...), the code type, the size, and the desired text.

## 2D RADIO SCANNER SYSTEM SF1

- ▶ Scope of delivery includes:
  - Scanner
  - Carrying case
  - Hand strap
  - Charger
  - Power supply incl. cable
  - Optional: Spare battery
  - Optional: Additional hand strap



|                              |  |
|------------------------------|--|
| <b>Scanner</b>               | 2D handheld scanner for omnidirectional scanning       |
| <b>Reading capability</b>    | Reads all common barcodes (linear and two-dimensional) |
| <b>Range to base station</b> | 10 m   |

Item no. 22943



- Advantages:**
- Ultra-lightweight at just 80 g
  - Extremely robust
  - Completely wireless

## 2D RADIO SCANNER SYSTEM XENON 1952

- ▶ Scope of delivery includes:
  - Scanner
  - Base station
  - Power supply
  - USB cable set (or RS-232 cable set or PS/2 cable set)
  - Optional: Stand



|                                 |  |
|---------------------------------|--|
| <b>Scanner</b>                  | 2D handheld scanner for omnidirectional scanning       |
| <b>Reading capability</b>       | Reads all common barcodes (linear and two-dimensional) |
| <b>Maximum reading distance</b> | 48 cm  |
| <b>Range to base station</b>    | 10 m   |

Item no. 22851



## 2D SCANNER SYSTEM XENON 1950

- ▶ Scope of delivery includes:
  - Scanner
  - USB cable set (or RS-232 cable set or PS/2 cable set)
  - Optional: Stand



|                              |  |
|------------------------------|--|
| <b>Scanner</b>               | 2D handheld scanner for omnidirectional scanning       |
| <b>Reading capability</b>    | Reads all common barcodes (linear and two-dimensional) |
| <b>Range to base station</b> | 48 cm  |

Item no. 22780





## TT4-SX

Colour touchscreen,  
Integrated Wi-Fi module



With the professional thermal transfer printer, you can produce high-quality labels for textile identification in large quantities. Thanks to the user-friendly colour touchscreen, operation is a breeze! The TT4-SX offers various options for integration into your system.

# FOR DURABLE AND READABLE LABELS THERMAL TRANSFER PRINTING SYSTEMS

A long-lasting, easy-to-read label is essential for a smooth production process and accurate assignment. If the label becomes unreadable, the textile can no longer be correctly identified — resulting in dissatisfied customers, extra work, and added costs.

The solution lies in the right combination of printer type, label material, and ink ribbon. Not every printer is compatible with every material, and both label and ink ribbon must be perfectly matched. When these components are ideally configured, additional factors such as printing speed, contact pressure, and temperature become critical. Incorrect settings can lead to peeling labels or poor readability. To ensure you can get started right away, we pre-configure your system with the optimal parameters — and your personal contact is always available to support you.

- ▶ High-performance thermal transfer printer with special heating element and 300 dpi resolution
- ▶ Large colour touchscreen with self-explanatory icons for intuitive operation
- ▶ Built-in fonts, barcodes, and tutorial videos available
- ▶ 32-bit processor with 800 MHz clock speed and 256 MB RAM
- ▶ Maximum label width: 105.6 mm
- ▶ Interfaces: SD card slot, USB, Ethernet, RS-232
- ▶ USB port for keyboard and scanner
- ▶ Sensor for translucent media and reflective sensor
- ▶ Especially suitable for labels in workwear applications

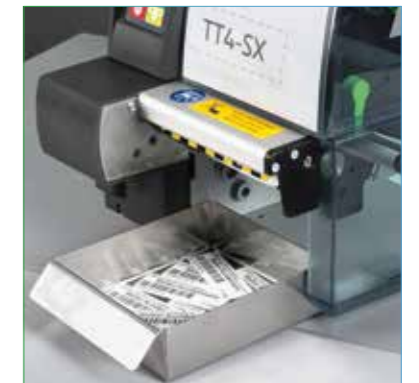
TT4-SX Item no. 21683

TT4-SXM centered Item no. 21728

TT4-SXM centered with draw roller Item no. 21738



Further Information:



## TT4-MX

Operates without a PC • For use in laundries, nursing homes, and fire brigades

Use your TT4-MX in stand-alone mode without a computer connection! Access label templates quickly and easily via memory card or USB stick.



- ▶ Robust print mechanism
- ▶ Large colour touchscreen with self-explanatory icons for intuitive operation
- ▶ Interfaces: USB, Ethernet, RS-232
- ▶ USB master for keyboard and scanner
- ▶ Sensor for translucent media & reflective sensor
- ▶ Resolution: 300 dpi
- ▶ Maximum label width: 105.7 mm

TT4-MX Item no.22070

TT4-MX with dispensing unit Item no. 22071

TT4-MX with cutting device Item no. 22072  
(only suitable for paper labels)



Print pre-cut labels as needed.



For a perfect print result, we offer matching ink ribbons.



Self-adhesive and wash-resistant: Our textile labels for workwear.

## TT5-L

Intuitive operation via touchscreen



- ▶ Intuitive operation via touchscreen
- ▶ Structured menu navigation with self-explanatory icons
- ▶ Auto-calibration with a single button for a quick start
- ▶ Easy management of label templates: includes 10 standard label templates
- ▶ Usable in stand-alone mode or with PC connection
- ▶ Interfaces: USB, Ethernet, RS-232
- ▶ Resolution: 203 dpi

TT5-L with keyboard (stand-alone operation) Item no. 22619

TT5-L with WinTex 5 Lite Item no. 22615

External unwinder for larger rolls Item no.18064

The unique thermal transfer printer from the THERMOTEX range!  
The compact TT5-L is flexible in use — both with the WinTex 5 software and in stand-alone operation.  
Its intuitive touchscreen menu makes operation self-explanatory. All user-relevant parts of the printer are clearly marked with signal colours.



### The in-house THERMOTEX Thermal Transfer Printer!

Digitalization is advancing rapidly, increasing the demands of today's fast-paced business world. That's why our development department invested significant effort into creating your user-friendly printer. Using the touchscreen, you can access all relevant operating options to quickly produce wash-resistant labels.



## SPIRIT 3

Self-opening

- ▶ Larger lower plate for bigger labels or emblems
- ▶ Quick start thanks to high heating performance
- ▶ Self-opening
- ▶ Especially suitable for workshops for people with disabilities

|                    |                     |
|--------------------|---------------------|
| <b>Connection</b>  | 230 V, 50 Hz, 750 W |
| <b>Width</b>       | 220 mm              |
| <b>Height</b>      | 500 mm              |
| <b>Depth</b>       | 450 mm              |
| <b>Weight</b>      | 15 kg               |
| <b>Upper plate</b> | 150 x 115 mm        |

Item no. 13873

For more information about heat-seal machines:



We're happy to advise you on choosing your heat-sealing machine!



## SPIRIT 1

Electronic control

- ▶ Especially suitable for nursing homes
- ▶ With large display and many functions
- ▶ Entry-level model

|                    |                     |
|--------------------|---------------------|
| <b>Connection</b>  | 230 V, 50 Hz, 550 W |
| <b>Width</b>       | 220 mm              |
| <b>Height</b>      | 500 mm              |
| <b>Depth</b>       | 450 mm              |
| <b>Weight</b>      | 14 kg               |
| <b>Upper plate</b> | 125 x 95 mm         |

Item no. 13812

## WINTEXX 5

For easy label design



With the WinTExx 5 software, you can easily connect your thermal transfer printing systems to your network computer.

The two versions, Pro and Lite, offer a choice between a simple Lite basic package for standard label design and a powerful Pro version with special label design features, extensive database connectivity, and simultaneous access to network printers.

This specialized software enables the integration of various fonts, characters, and graphics, such as care symbols and logos.



Wintexx 5 Lite

Item no. 23922

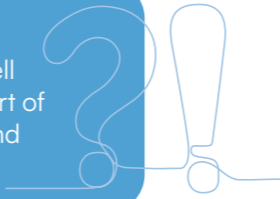
Wintexx 5 Pro

Item no. 23924

# LAUNDRY LOGISTICS

## Laundry Bags and Laundry Nets

Laundry bags and nets are widely used by fire brigades and emergency services, as well as in their associated laundries. They are designed for the sorting and hygienic transport of protective clothing and workwear. Choose from our extensive range of laundry bags and nets. A wide variety of colours, shapes, and fasteners is available.



## LAUNDRY TRANSPORT BAGS

Standard: Fixlock cord fastener; other fastener options available on request

- ▶ White or fully coloured
- ▶ Fabric: 100% polyester, 170 g/m<sup>2</sup> (standard)
- ▶ Dimensions: approx. 100 x 60 cm

### Your Benefits:

- ▶ Laundry bags are ideal for pre-sorting and ensure hygienic and orderly storage of laundry.

| Colour | Item no. |
|--------|----------|
| white  | 56462    |
| green  | 56459    |
| yellow | 56984    |
| grey   | 64618    |
| red    | 56461    |
| blue   | 56460    |
| brown  | 59629    |
| orange | 59630    |

Starting from a minimum order quantity of 100 units, laundry bags, laundry transport bags, and resident laundry bags can also be supplied with customized single-colour woven-in designs.

Woven-in designs are available in green, yellow, red, blue, brown, white, or black.

Woven-in customization available from 100 pieces



Fasteners for laundry transport bags

Fixlock cord fastener

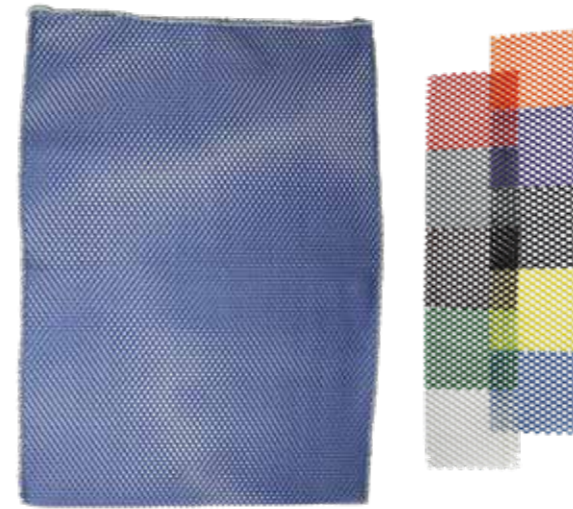
Poplock cord fastener



## LAUNDRY NETS AND CLOSURES

Tailored variety — Choose from a wide range of sizes, colours, mesh fabrics, and accessories.

Minimum order quantity per colour and size: 10 pieces.



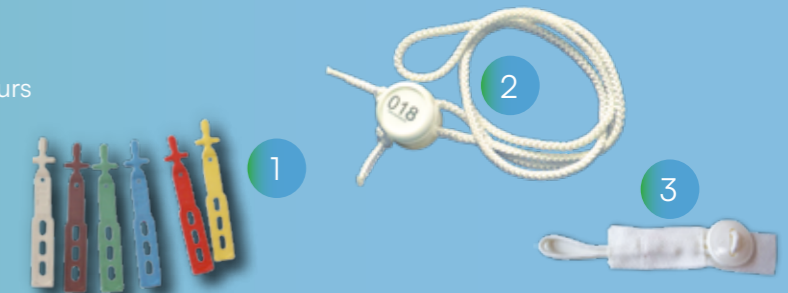
- ▶ Standard mesh fabric PES 2, 100% polyester  
Approx. 173 g/m<sup>2</sup>, mesh width approx. 7 mm
- ▶ Resistant to all common chemicals used in laundries
- ▶ Temperature resistance: up to 95 °C during washing, up to 130 °C during drying (max. 120 °C with DIBE closure, max. 110 °C with rubber closure)
- ▶ Standard sizes:
  - 40 x 60 cm (holds approx. 1.5 kg of laundry)
  - 50 x 70 cm (holds approx. 3 kg of laundry)
  - 60 x 90 cm (holds approx. 5 kg of laundry)
- ▶ Special sizes available
- ▶ Colours: white, green, yellow, red, blue, brown, orange, violet, black, and grey

- ▶ Zipper: Available without cover, with triangular cover, or with 4 cm tape cover



### Closures for laundry nets

- ▶ (1) Rubber net fasteners — available in various colours
- ▶ (2) DIBE cord fastener — available in white, yellow, red, green, blue, brown, violet, orange, grey, and black. White version available with labeling
- ▶ (3) Teflon button fasteners



## LAUNDRY BAG WRAPPING BAG

With pennant for your identification

- ▶ This bag is fully coated, bacteria-proof and waterproof
- ▶ Dimensions: approx. 100 x 58 cm
- ▶ With pennant approx. 10 x 13 cm, attached at the top hem, sewn onto the wider side
- ▶ Standard fabric toggle
- ▶ Colour: red (Item no. 68739)

### Your Benefits:

The coated bag does not absorb moisture and can be reused multiple times.



Pennant



Pennant

# STARTER PACKAGES

## TT4-MX

More on this on p. 24



## SPIRIT 1

More on this on p. 26



## TT5-L

More on this on p. 25



## SPIRIT 1

More on this on p. 26



## FIXTEXX 2026

More on this on p. 6



## WINTEXX 5

More on this on p. 27



## 1 ROLL OF INK RIBBON

More on this on p. 6

## FIXTEXX

Two Rolls



## INK RIBBON

One Roll



## USB MINI KEYBOARD

The space-saving option



Fire brigade package

Item no. 22346

### Textile labeling and inventory management

This package, specially developed for fire brigades, provides practical tools for your station. Label your firefighting equipment — from duty clothing to gear and accessories. We deliver the devices ready for immediate use, featuring proven THERMOTEX quality.

**OPTIONAL**  
at an additional cost



SK MATERIAL  
for inventory management  
More on this on p. 7



Matching ribbon ink

W x L: 40mm x 30m  
R-S-1-sw

- ▶ Quality: Fixtexx 2009 or Fixtexx 2041
- ▶ Roll length: 12.5 m
- ▶ Format: 41 mm x 14.4 mm

- ▶ I-C-9-sw for Fixtexx 2009 or I-C-8-sw for Fixtexx 2041
- ▶ Dimensions (W x L): 50 mm x 100 m

- ▶ Compact mini keyboard for data entry
- ▶ USB connection

TT5-L-Paket with keyboard  
TT5-L-Paket without Spirit

Item no. 22795  
Item no. 22794

### Unique — future-oriented — 100% THERMOTEX

Get the handy TT5-L in a practical package including patch machine, keyboard, and consumables. This way, you start with all the resources you need for a smooth and worry-free workflow.



**THERMOTEX NAGEL GmbH**

Phone +49 781 96 16 - 0  
Fax +49 781 96 16 - 50  
Schutterstraße 14  
77746 Schutterwald / D  
[www.thermo-tex.de](http://www.thermo-tex.de)

**THERMOTEX EUROPE AG**

Phone +41 61 75 19 - 100  
Fax +41 61 75 19 - 101  
Langenhagstraße 13  
4147 Aesch / CH  
[www.thermo-tex.ch](http://www.thermo-tex.ch)